

148 Adderley Street

Birmingham, B9 4ED

SHEPHERD
COMMERCIAL



TO LET

3,170 SQ FT
(294.50 SQ M)

£22 PER SQ FT

3,170 SQ FT CHARACTER
LEISURE VENUE WITH
TERRACE – FORMER LIVE
MUSIC BAR

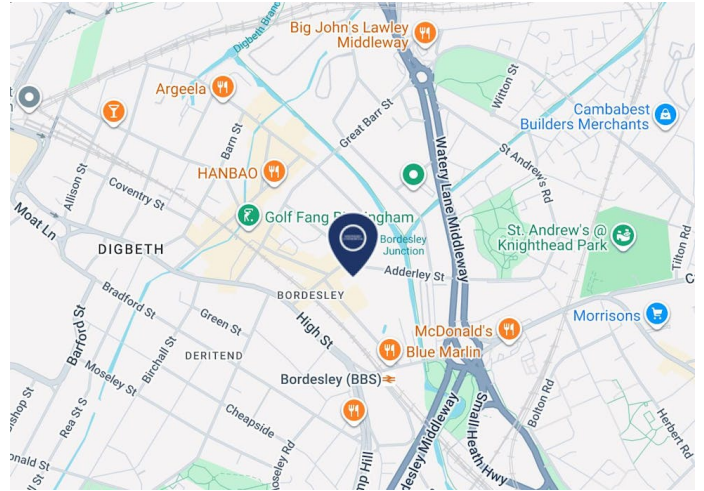
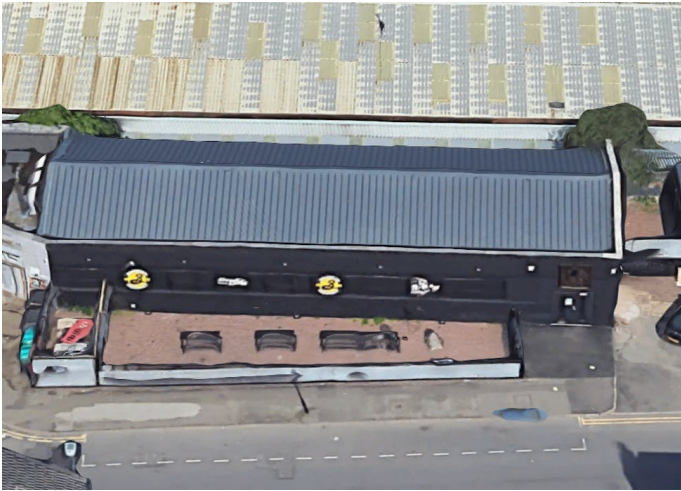
- Former live music / rock bar venue
- External terrace / outside seating area
- Suitable for bar, live music or leisure uses (STP)
- Character industrial style building
- 3,170 sq ft self-contained leisure premises
- City fringe location

01564 778890
www.shepcom.com

148 Adderley Street

Birmingham, B9 4ED

SHEPHERD
COMMERCIAL



Summary

Available Size	3,170 sq ft / 294.50 sq m
Rent	£22 per sq ft
Estate Charge	£1,654 per annum
EPC	Upon enquiry

Description

The property comprises a self-contained leisure premises extending to approximately 3,170 sq ft, previously operating as a live music and rock bar venue.

The building offers a characterful space suitable for a range of bar, leisure and hospitality uses, benefiting from a distinctive industrial style and flexible internal layout.

Externally, the property benefits from a dedicated terrace area suitable for outside seating, providing additional trading space and customer appeal.

The premises presents an excellent opportunity for operators seeking a city fringe venue with strong character, capable of accommodating a variety of leisure concepts, including bar, live music venue, themed hospitality or alternative leisure use (subject to the necessary consents).

Location

The property is situated on Adderley Street, within a well-established commercial and leisure area to the east of Birmingham city centre.

The location provides convenient access to the Digbeth and city centre leisure circuits, with a mix of independent hospitality operators, commercial occupiers and creative businesses nearby.

Adderley Street benefits from good connectivity to the wider Birmingham area, with Birmingham Moor Street and Birmingham New Street stations located within close proximity, as well as convenient access to the A45 and inner ring road network.

The surrounding area has developed into a vibrant destination for leisure and creative industries, making it a popular location for independent operators and destination venues.

Terms

The property is available by way of a new lease on terms to be agreed.

Rent: £69,732 per annum
Estate charge: £1,654 per annum
Building insurance: £2,496 per annum

Viewings

Strictly by appointment through Shepherd Commercial.

Rateable Value

The Rateable Value will be £15,750 from 1 April 2026. Interested parties should make their own enquiries with Birmingham City Council to confirm rates payable.



Charlie Boswell

01564 778 890 | 07913 142038
charlie@shepcom.com